
Specification of DHW01O **Wireless Motion Sensor**



Dinsafe®, MatiGard®, Magictrl® are trademarks of Dinsafe® Ltd. ©2015. All rights reserved.

Website : www.dinsafe.com E-mail : info@dinsafe.com

Features

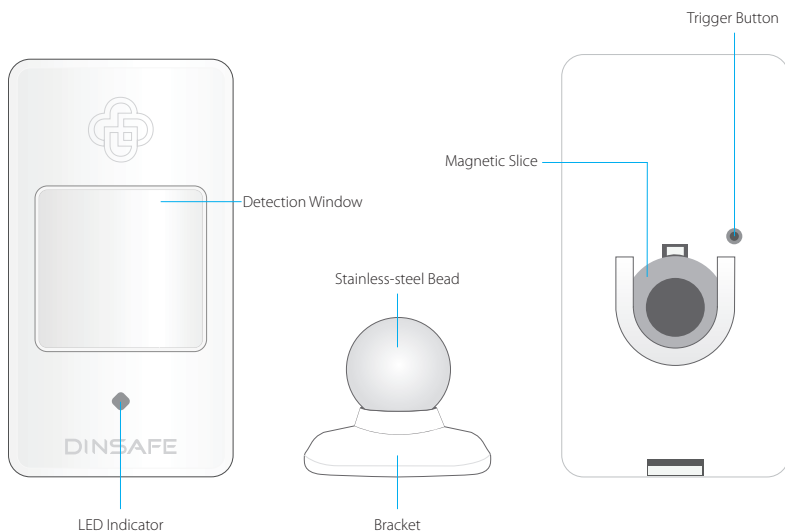
The DHW01O wireless motion sensor is an accessory of MatiGard® series smart alarm system, mainly for indoor use. With high performance infrared sensor, works under digital dual-core fuzzy logic operative programming and intelligent analysis, it accurately detects human body movement and effectively avoids false alarms. Featured with automatic temperature compensation technology, it ensures high intelligence, sensitivity, and stability.

It's fashion design, energy saving, low battery warning supported and with long transmission distance. The main panel will send a SMS to user for battery changing when needed. With 360° angle adjustment supported, it's easy to setup and never get stuck.

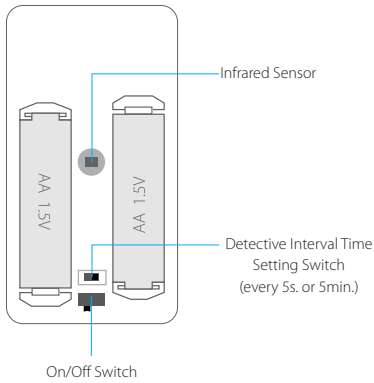
Parameters

• Working Voltage	DC 3V
• Battery	2 × AA battery(1.5V)
• Working Current	22mA
• Standby Current	60μA
• Detective Range	110°
• Detective Distance	9m
• Transmission Distance	Without obstacle 100m
• Transmission Frequency	433.29MHz
• Working Temperature	-10°C~40°C
• Humidity	≤90%rh (non-condensing)
• Weight	66g (battery not included) 112g (battery included) 62.3g (Bracket)
• Dimension	99.6mm*54.0mm*40.2mm L*W*H(±0.1mm)

Appearance



PCB Layout



Operating Instructions

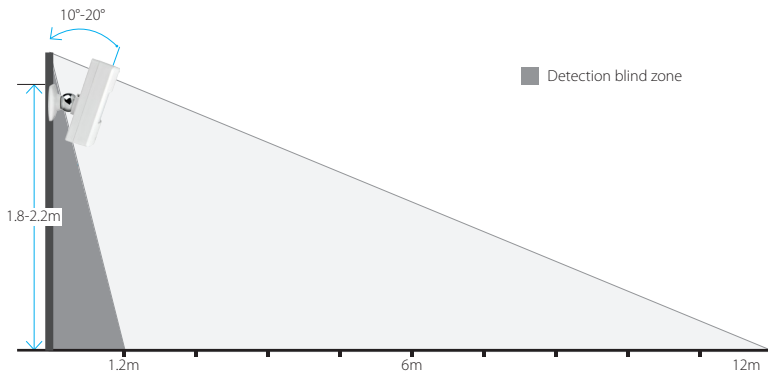
1. Working principle
with digital dual-core fuzzy logic operative programming and intelligent analysis, it accurately detects human body movement with infrared sensor and sends signal to main panel.

2. Pairing with main panel

- ① Scan the QR code printed on the sensor and follow the guideline in App to continue.
- ② It is successfully paired when an informing SMS received indicating.

Installation & Notice

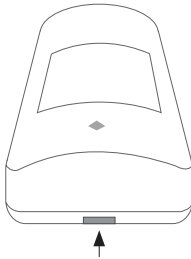
- Open the case and remove the battery insulative strip.
- Pairing to main panel by App before installing.
- Fix the bracket with double-side sticky tape or screws on wall, connect the sensor to bracket, adjust a proper angle. 360° angle adjustment is easily available with connection of bead and magnetic slice.
- Recommended to install at height of 1.8-2.2m from ground, with gradient 10°-20°.
- Indoor use only. Avoid installing the sensors in area with strong light, temperature changes rapidly or the air stream flows frequently, like close to windows, air conditioner, refrigerator, heater, oven, and large obstacles.
- Avoid installing two sensors in the same detection scope to interference.
- The sensor is more sensitive to the cross movement than to the vertical movement, so the performance of sensor is best when the detection direction is vertical to the walking direction of people.



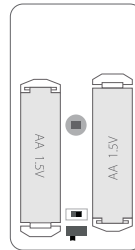
Trigger Mode Clarification

Trigger Mode	Clarification
<i>Close</i>	Deactivated when triggered
<i>Instant</i>	Activated when ARM/HOME ARM
<i>24 Hours</i>	Activated even when DISARM
<i>Home</i>	Deactivated when DISARM/HOME ARM
<i>Door Chime</i>	No alarm but clanking
<i>Delay</i>	Wait few seconds before alarm

Battery replacement instructions



① Press down the hook on sensor with thumb, push it to open the cover.



② Replace with 2x AA battery.